

FINANCIAL TIMES

# how to speak it

AUGUST 1 2015

**HEART & SOUL**  
THE UNIVERSE OF  
DONNA KARAN





# how to find it

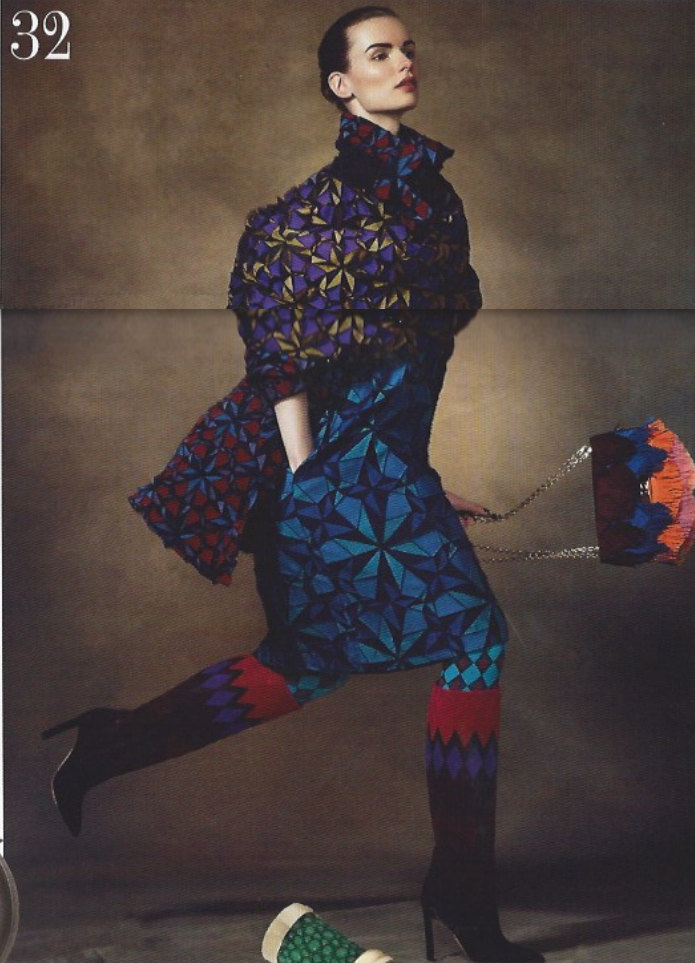
AUGUST 1 2015

31



51

32



20

## REGULARS

- 9 THE AESTHETE** Donna Karan opens her personal style file for Christina Ohly Evans
- 19 VAN DER POSTINGS** Luxury insights from Lucia van der Post
- 27 THE E-DIT** The best of the week's stories on Howtospendit.com
- 31 ECLECTIBLES** Anna Beesley's desirable acquirables
- 45 TECHNOLIS** Jonathan Margolis gives good gadget
- 48 PAST MASTERS** Simon de Burton on the accelerating cachet of the original superbike
- 51 TRAVELISTA** Maria Shollenbarger on where to be and what to see
- 54 THE SHARPENER** Tom Stubbs spotlights considered takes on tees
- 57 WRY SOCIETY** Clare Naylor's tale of a love quest on the Glorious Twelfth
- 59 CULT SHOP** Rima Suqi discovers a cache of sublime curios in New York
- 59 FOR GOODNESS' SAKE** A trio of charitable channels cherry-picked by Sibéal Pounder
- 61 SMART MONEY** Jamie Reid on high stakes and retro revelry at Goodwood
- 61 THE GANNET** Bill Knott savours the joys of Sicily's laid-back local fare
- 62 PERFECT WEEKEND** Gallerist Alan Cristea reveals his London hotspots to Emma Crichton-Miller

## LUXURY READS

- 10 IN FAENA FETTLE** Maria Shollenbarger shines a light on Miami as it readies itself for Alan Faena's eponymous new district
- 20 BLEND OF AN ERA** Jenny Dalton on the new furniture playing with a panoply of retro styles
- 32 PRISMATIC PIZZAZZ** Millicent Simon presents eye-popping geometric fashion



48

MOST VIEWED ON

## howtospendit.com

- **SHADOW YACHTS** The quirky new superyacht subgenre stealing the limelight
- **DONNA KARAN** The second instalment of the designer's personal style file
- **DOURO VALLEY** Portugal's under-the-radar wine region
- **PLUS** Over 950 inspirational ideas in the Gift Guide, updated daily



Trianon cufflinks from the Gift Guide

EDITOR: JULIAN DE BONO DEPUTY EDITOR: BEATRICE HODGKIN ASSISTANT EDITORS: LUCINDA BARRING, AMY GREER EDITORIAL RESEARCHER: SIBÉAL POUNDER JUNIOR EDITORIAL RESEARCHER: JAMILLA SPEAR EDITORIAL ASSISTANT: LINDA WINTER JUNIOR EDITORIAL ASSISTANT: CLARA BALDOCK ART DIRECTOR: STYAN SAEFFER DEPUTY ART DIRECTOR: BEN TURNER PHOTO DIRECTOR: SUSAN BANTON PICTURE RESEARCHER: EMMA WALTERS CHIEF SUBEDITORS: LIZ JONESTON, KATE CHAPPEL SUBEDITORS: ROBERT COOK, ALEXANDER MALLON JUNIOR SUBEDITOR: THE ARTISTRY EDITOR: FASHION DIRECTOR: DAMIAN FORD JUNIOR FASHION EDITOR: VILLOUANT SIMON FASHION ASSISTANT: CUP-BELLE HELMRE Associate Editor: LUCIA VAN DER POST CONTRIBUTING EDITORS: KYRIENNE BUCKLEY, JAMON DE BURTON, NICK FOLGOS, JONATHAN MARGOLIS, MARIA SHOLLENBARGER, JANE TOMPSON US CONTRIBUTORS: CHRISTINA OHLY EVANS PUBLISHING MANAGER: ED THOMPSON PRODUCTION: DENISE MACKLIN ADVERTISING PRODUCTION: DANIEL LESAR, DANIEL MACKLIN

TWITTER.COM/HTSI EDITORIAL ENQUIRIES: 020-7873 3203 ADVERTISING ENQUIRIES: 020-7873 4208 COVER IMAGE: by Dorothy Wong, see page 9 how to Spend it magazine is printed by Weybridge Press Limited, and published by The Financial Times Ltd, Number One Southway Bridge, London SE1 9HL. Originated by Deter Promedia



# travelista

**Wander woman Maria Shollenbarger fast-tracks international intelligence on where to be and what to see**

➔ Happy 50th birthday to **SINGAPORE**: while National Day, the anniversary of the island nation's founding, is August 9, its circa 5.5m citizens and residents have been celebrating all year with a chock-a-block calendar of events, from the Southeast Asian Games (which the city hosted in June) to the inauguration of its 64,000sq m National Art Gallery in the coming months. There's soon to be an ultra-luxurious new hotel brand minted here too, with its flagship property of two heritage buildings renovated to elegant new purpose. The 157 rooms and suites at **The Patina, Capitol Singapore** ([www.patinahotels.com](http://www.patinahotels.com); from about £519) are spread across the 1933 Capitol Building, 1904 Stamford House and an adjacent slick, curvilinear

glass pavilion designed by Richard Meier. The late great Jaya Ibrahim authored the room decor – a take on his signature Zen-meets-opulence style – and Peruvian master Pedro Miguel Schiaffino will oversee the kitchen and a bar designed by New York darlings AvroKo, which will toe the artisanal cocktail line that Singapore has been doing so well of late. And after an absence from the Lion City last year, **British Polo Day** ([www.britishpoloday.com](http://www.britishpoloday.com)) – the glittering, world-circuit sport-slash-social event – returns on October 31, with the Singapore Polo Club team playing Cambridge. From there things get really

Above: Nihiwatu resort on Sumba, Indonesia, which hosts an array of British Polo Day events in November. Below: EcoCamp Patagonia, the base for Natural World Safaris' puma-tracking expedition



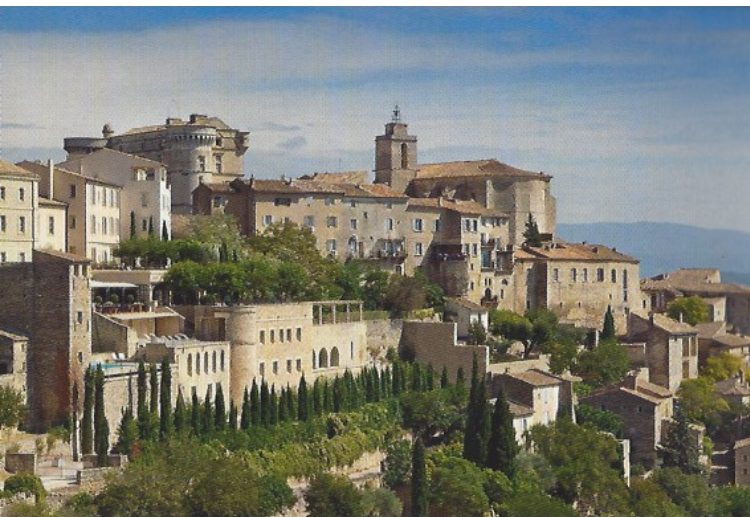
Above: the Stamford Suite at The Patina, Capitol Singapore

interesting, as British Polo Day's organisers take their travelling party to the island of Sumba in **INDONESIA** on November 3 for a seven-day extravaganza of stand-up paddleboarding and hilltop yoga, parties and beach banquets, culminating in a game played on the sand. It's all happening – where else? – at **Nihiwatu** ([www.nihiwatu.com](http://www.nihiwatu.com); from \$1,100 for three nights), where owner Chris Burch is this month adding his own sprawling estate to the resort pool, along with two traditional three-bedroom Sumbanese villas set at the Celebes Sea's edge, overlooking Nihi's now almost too famous left-hand surf break.

➔ A different take on wilderness is what Natural World Safaris ([www.naturalworldsafaris.com](http://www.naturalworldsafaris.com)) founder Will Bolsover proposes this October in Chile, where a small group will venture into **PATAGONIA**'s Torres del Paine National Park in pursuit of the Andean puma, accompanied by preeminent photographer and crack mountain guide Diego Araya. Guests will spend four days (from £1,850 per person) exploring the park's eastern reaches (an advance team will be dispatched to track the cats for the most seamless sighting and







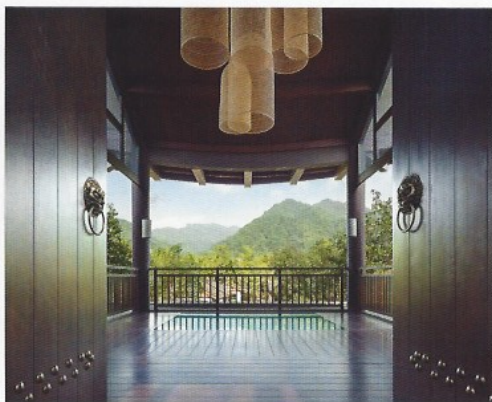
Above: the village of Gordes and its Bastide in Provence. Below: Six Senses Qing Cheng Mountain in Chengdu, China

establishment, has a new private three-bedroom villa on offer. Guests of **Anchorage House** (from \$1,500 per night) can take advantage of all the Wauwinet's draws, from its hybrid bikes and excellent spa to Toppers, its seafood-centric restaurant, considered the best on Nantucket. The house's two vast wooden decks, private garden and massive fireplace (for when the winds buffet this northeasternmost corner of the island) round out its charms.

→ A city of 14m in **CHINA** might not seem the most intuitive location for a resort brand known for purveying sustainable indulgence at various beachy, back-of-beyond coordinates, but **CHENGDU** is where Six Senses has planted its first flag in the Middle Kingdom. **Six Senses Qing Cheng Mountain** ([www.sixsenses.com](http://www.sixsenses.com); from £260) leverages its proximity to the Unesco-protected Dujiangyan heritage site and Mount Qingcheng rather than to the metropolis: its 113 suites and villas have all the eco and style credentials the company's known for (the beamed ceilings and smoothly planked walls are all of sustainable timber), while the 1,700sq m spa – complete with indoor-outdoor pools and 10 treatment rooms – is vintage Six Senses.

→ The Luberon is quintessential **PROVENCE**, a *département* where landscapes are so perfect they look as if they should be copyrighted to Peter Mayle's franchise. Now a hotel that actually took a star turn in a Mayle vehicle is back in business here: **La Bastide de Gordes** ([www.bastide-de-gordes.com](http://www.bastide-de-gordes.com); from €340), which some will recognise from the Mayle-authored, Ridley Scott-directed *A Good Year*. A €20m top-to-toe renovation has left the original villa luxuriously ready to welcome guests, with 40 rooms and suites restored along resolutely traditional lines – profusions of toile de Jouy, gilt frames and slipper chairs – and a full-service Sisley spa.

→ In **LONDON**, a familiar and much venerated face has just made a stunning reappearance. After a 17-month closure, the Grade II-listed Regency interiors of **The Lanesborough** ([www.thelanesborough.com](http://www.thelanesborough.com); from £715) boast a design scheme awash with the work of British bespoke makers, from chandeliers to hand-stencilled and bronze-inlaid designs (about 5,000 of them throughout the hotel) to trompe l'oeil wall paintings. But a Gallic talent might be the most exciting news for some: Eric Fréchon, of Le Bristol in Paris, has been installed in the kitchens as *chef patron*, along with his Epicure protégé Florian Favario, as *chef de cuisine*. ✦



snapping possible); nights will be spent savouring the lo-fi luxuries – firepit barbecues and starlight seen through geodesic-dome tents – of **EcoCamp Patagonia** ([www.ecocamp.travel](http://www.ecocamp.travel)).

→ Charms of a definitively New England sort – shingled saltbox cottages, tall dunes and old-school Wasp character in spades – define **NANTUCKET**, where landmark hotel the **Wauwinet** ([www.wauwinet.com](http://www.wauwinet.com); from \$300), a 140-year-old American



Above: the private dining room at The Lanesborough, London